



M-284 C



M-284 C



FEBRIC DETAIL

TOP:- PURE DULL ORGANZA EMBROIDERED WORK
WITH MOTI WORK

BOTTOMINNER:- SANTOON WITH WORK

DUPATTA:- PURE Orgza WITH EMBROIDERY WORK
WITH CUTWORK

☞ DRY CLEAN ONLY.
☞ DO NOT USE ANY BLEACH OR STAIN REMOVING CHEMICAL.
☞ IRON THE FABRIC AT MODERATE TEMPERATURE.





M-284 A



FEBRIC DETAIL

TOP:- PURE DULL ORGANZA EMBROIDERED WORK
WITH MOTI WORK

BOTTOM/INNER:- SANTOON WITH WORK

DUPATTA:- PURE Orgza WITH EMBROIDERY WORK
WITH CUTWORK

☞ DRY CLEAN ONLY.
☞ DO NOT USE ANY BLEACH OR STAIN REMOVING CHEMICAL.
☞ IRON THE FABRIC AT MODERATE TEMPERATURE.





M-284 D

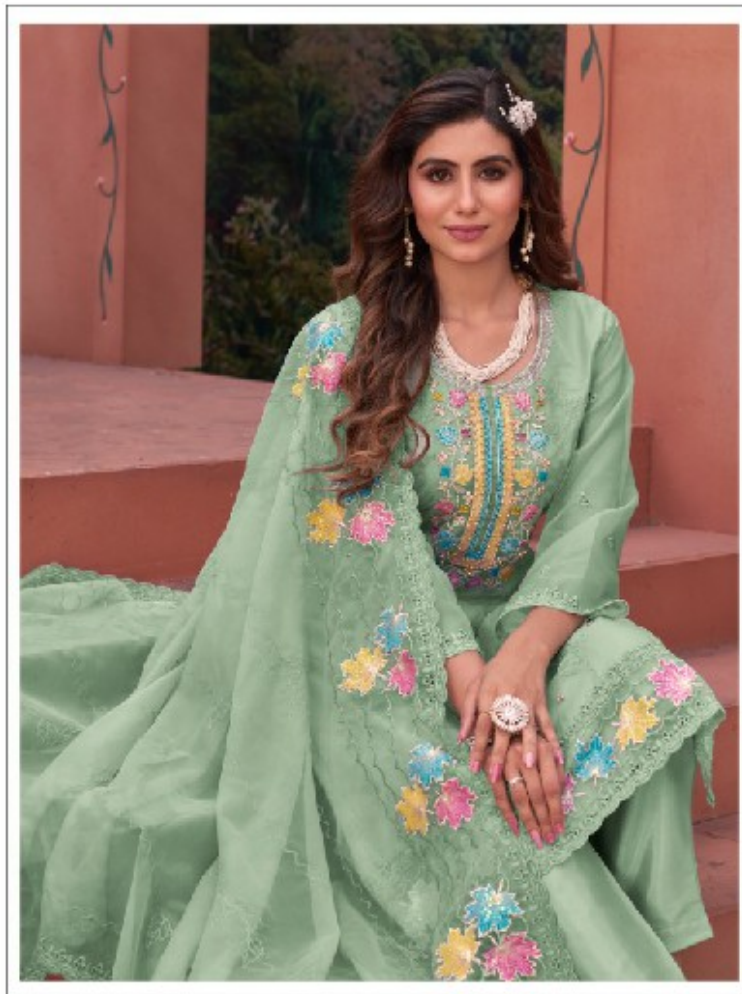


FEBRIC DETAIL

TOP:- PURE DULL ORGANZA EMBROIDERED WORK
WITH MOTI WORK
BOTTOM/INNER:- SANTOON WITH WORK
DUPATTA:- PURE Orgza WITH EMBROIDERY WORK
WITH CUTWORK

☞ DRY CLEAN ONLY.
☞ DO NOT USE ANY BLEACH OR STAIN REMOVING CHEMICAL.
☞ IRON THE FABRIC AT MODERATE TEMPERATURE.





M-284 B



FEBRIC DETAIL

TOP:- PURE DULL ORGANZA EMBROIDERED WORK
WITH MOTI WORK

BOTTOM/INNER:- SANTOON WITH WORK

DUPATTA:- PURE Orgza WITH EMBROIDERY WORK
WITH CUTWORK

☞ DRY CLEAN ONLY.
☞ DO NOT USE ANY BLEACH OR STAIN REMOVING CHEMICAL.
☞ IRON THE FABRIC AT MODERATE TEMPERATURE.





FEBRIC DETAIL

TOP:- PURE DULL ORGANZA EMBROIDERED WORK
WITH MOTI WORK

BOTTOMINNER:- SANTOON WITH WORK

DUPATTA:- PURE Orngza WITH EMBROIDERY WORK
WITH CUTWORK



M-284 A



M-284 B



M-284 C



M-284 D







